

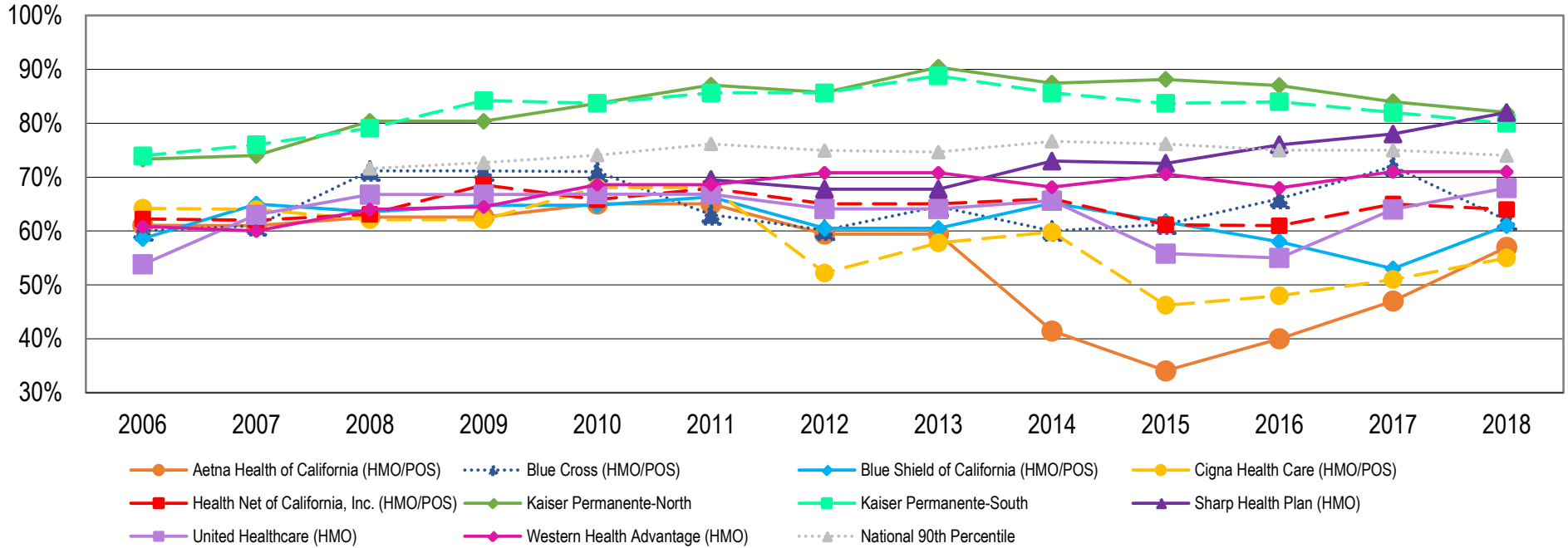


# Right Care Initiative: Key Quality Indicators for Cardiovascular Prevention Among California Health Plans

Trend analysis provided by the UC Berkeley School of Public Health Right Care Research Team, November 2019



## Controlling High Blood Pressure (<140/90mmHg) Among California Health Plans



	2006 <sup>‡</sup>	2007 <sup>‡</sup>	2008 <sup>‡</sup>	2009 <sup>‡</sup>	2010 <sup>‡</sup>	2011 <sup>‡</sup>	2012 <sup>‡</sup>	2013 <sup>‡</sup>	2014 <sup>‡</sup>	2015 <sup>‡</sup>	2016 <sup>*</sup>	2017 <sup>*</sup>	2018 <sup>*</sup>	Δ Since 2006
Aetna Health of California (HMO/POS)	61.06%	61.00%	62.59%	62.59%	65.04%	65.04%	59.43%	59.43%	41.46%	34.06%	40.00%	47.00%	57.00%	-4.06%
Blue Cross (HMO/POS)	60.04%	61.00%	71.16%	71.16%	71.00%	63.02%	60.16%	64.56%	60.00%	61.27%	66.00%	72.00%	62.00%	1.96%
Blue Shield of California (HMO/POS)	58.60%	65.00%	63.55%	64.73%	64.79%	66.33%	60.50%	60.50%	65.20%	61.70%	58.00%	53.00%	61.00%	2.40%
Cigna Health Care (HMO/POS)	64.23%	64.00%	62.11%	62.11%	68.04%	68.04%	52.22%	57.80%	59.80%	46.23%	48.00%	51.00%	55.00%	-9.23%
Health Net of California, Inc. (HMO/POS)	62.23%	62.00%	63.11%	68.56%	65.82%	67.93%	65.03%	65.03%	65.96%	61.17%	61.00%	65.00%	64.00%	1.77%
<b>Kaiser Permanente-North</b>	73.31%	74.00%	<b>80.37%</b>	<b>80.37%</b>	<b>83.70%</b>	<b>87.08%</b>	<b>85.71%</b>	<b>90.41%</b>	<b>87.44%</b>	<b>88.13%</b>	<b>87.00%</b>	<b>84.00%</b>	<b>82.00%</b>	<b>8.69%</b>
<b>Kaiser Permanente-South</b>	73.97%	76.00%	<b>79.08%</b>	<b>84.23%</b>	<b>83.70%</b>	<b>85.64%</b>	<b>85.64%</b>	<b>88.81%</b>	<b>85.64%</b>	<b>83.70%</b>	<b>84.00%</b>	<b>82.00%</b>	<b>80.00%</b>	<b>6.03%</b>
<b>Sharp Health Plan (HMO)</b>						69.54%	67.78%	67.78%	72.98%	72.56%	<b>76.00%</b>	<b>78.00%</b>	<b>82.00%</b>	<b>12.46%</b>
United Healthcare (HMO)	53.81%	63.00%	66.75%	66.75%	66.83%	66.83%	64.10%	64.10%	65.63%	55.80%	55.00%	64.00%	68.00%	14.19%
Western Health Advantage (HMO)	60.83%	60.00%	63.99%	64.48%	68.61%	68.61%	70.80%	70.80%	68.13%	70.56%	68.00%	71.00%	71.00%	10.17%
<b>National 90th Percentile</b>			<b>71.61%</b>	<b>72.68%</b>	<b>74.09%</b>	<b>76.16%</b>	<b>74.94%</b>	<b>74.65%</b>	<b>76.64%</b>	<b>76.16%</b>	<b>75.00%</b>	<b>75.00%</b>	<b>74.00%</b>	<b>2.39%</b>
<b>California Average</b>			63.64%	69.44%	70.30%	70.81%	68.93%	68.16%	67.22%	63.35%				
<b>National Average</b>			63.37%	64.09%	63.43%	65.36%	63.04%	63.30%	63.98%	60.51%				

<sup>‡</sup> Data directly from National Committee for Quality Assurance (NCQA)

<sup>\*</sup> Data from NCQA, prepared by the CA Office of the Patient Advocate (OPA)

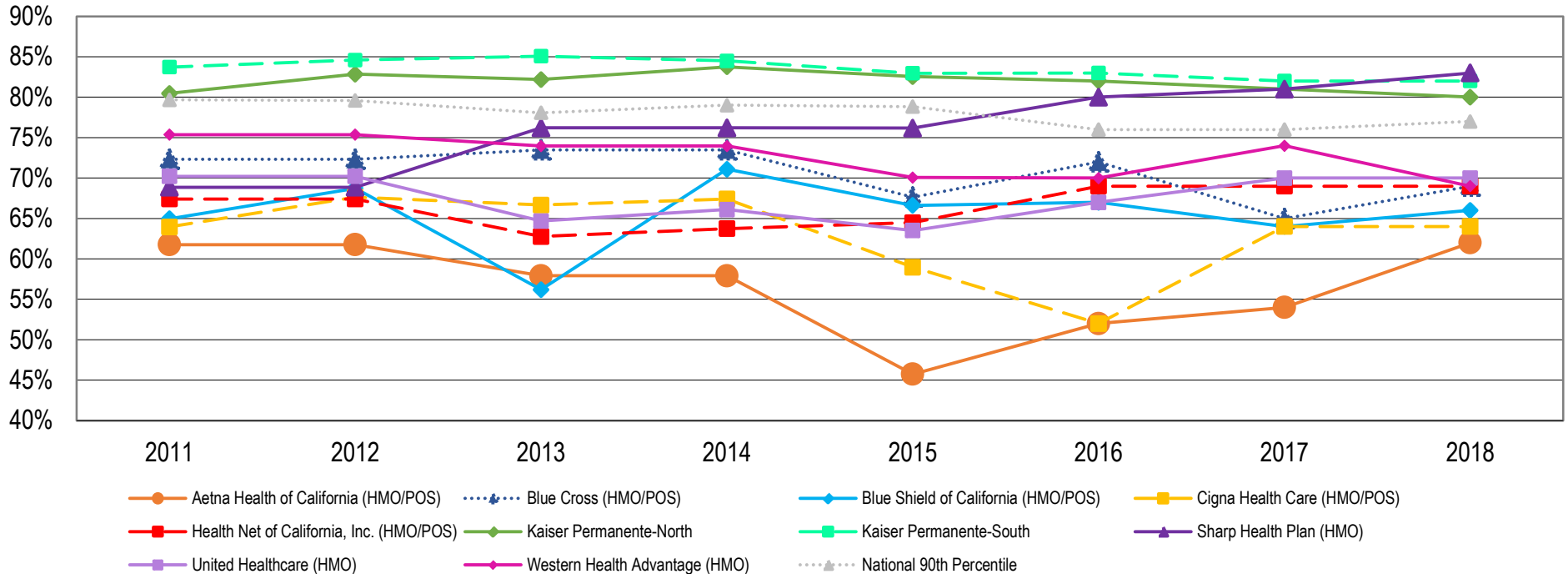


# Right Care Initiative: Key Quality Indicators for Cardiovascular Prevention Among California Health Plans

Trend analysis provided by the UC Berkeley School of Public Health Right Care Research Team, November 2019



## Controlling Blood Pressure (<140/90mmHg) for People with Diabetes Among California Health Plans



	2011 <sup>‡</sup>	2012 <sup>‡</sup>	2013 <sup>‡</sup>	2014 <sup>‡</sup>	2015 <sup>‡</sup>	2016 <sup>*</sup>	2017 <sup>*</sup>	2018 <sup>*</sup>	Δ Since 2011
Aetna Health of California (HMO/POS)	61.76%	61.76%	57.92%	57.92%	45.74%	52.00%	54.00%	62.00%	0.24%
Blue Cross (HMO/POS)	72.33%	72.33%	73.48%	73.48%	67.64%	72.00%	65.00%	69.00%	-3.33%
Blue Shield of California (HMO/POS)	64.97%	68.73%	56.20%	71.09%	66.61%	67.00%	64.00%	66.00%	1.03%
Cigna Health Care (HMO/POS)	63.96%	67.64%	66.67%	67.40%	58.97%	52.00%	64.00%	64.00%	0.04%
Health Net of California, Inc. (HMO/POS)	67.41%	67.41%	62.77%	63.75%	64.48%	69.00%	69.00%	69.00%	1.59%
<b>Kaiser Permanente-North</b>	<b>80.47%</b>	<b>82.85%</b>	<b>82.18%</b>	<b>83.76%</b>	<b>82.55%</b>	<b>82.00%</b>	<b>81.00%</b>	<b>80.00%</b>	<b>-0.47%</b>
<b>Kaiser Permanente-South</b>	<b>83.72%</b>	<b>84.60%</b>	<b>85.07%</b>	<b>84.50%</b>	<b>82.96%</b>	<b>83.00%</b>	<b>82.00%</b>	<b>82.00%</b>	<b>-1.72%</b>
Sharp Health Plan (HMO)	68.86%	68.86%	76.21%	76.21%	76.17%	80.00%	81.00%	83.00%	14.14%
United Healthcare (HMO)	70.22%	70.22%	64.68%	66.11%	63.51%	67.00%	70.00%	70.00%	-0.22%
Western Health Advantage (HMO)	75.36%	75.36%	73.97%	73.97%	70.07%	70.00%	74.00%	69.00%	-6.36%
<b>National 90th Percentile</b>	<b>79.68%</b>	<b>79.60%</b>	<b>78.08%</b>	<b>79.02%</b>	<b>78.83%</b>	<b>76.00%</b>	<b>76.00%</b>	<b>77.00%</b>	<b>-2.68%</b>
<b>California Average</b>	<b>67.16%</b>	<b>72.86%</b>	<b>63.62%</b>	<b>72.01%</b>	<b>67.62%</b>				
<b>National Average</b>	<b>65.83%</b>	<b>66.48%</b>	<b>64.97%</b>	<b>64.64%</b>	<b>60.18%</b>				

<sup>‡</sup> Data directly from National Committee for Quality Assurance (NCQA)

<sup>\*</sup> Data from NCQA, prepared by the CA Office of the Patient Advocate (OPA)

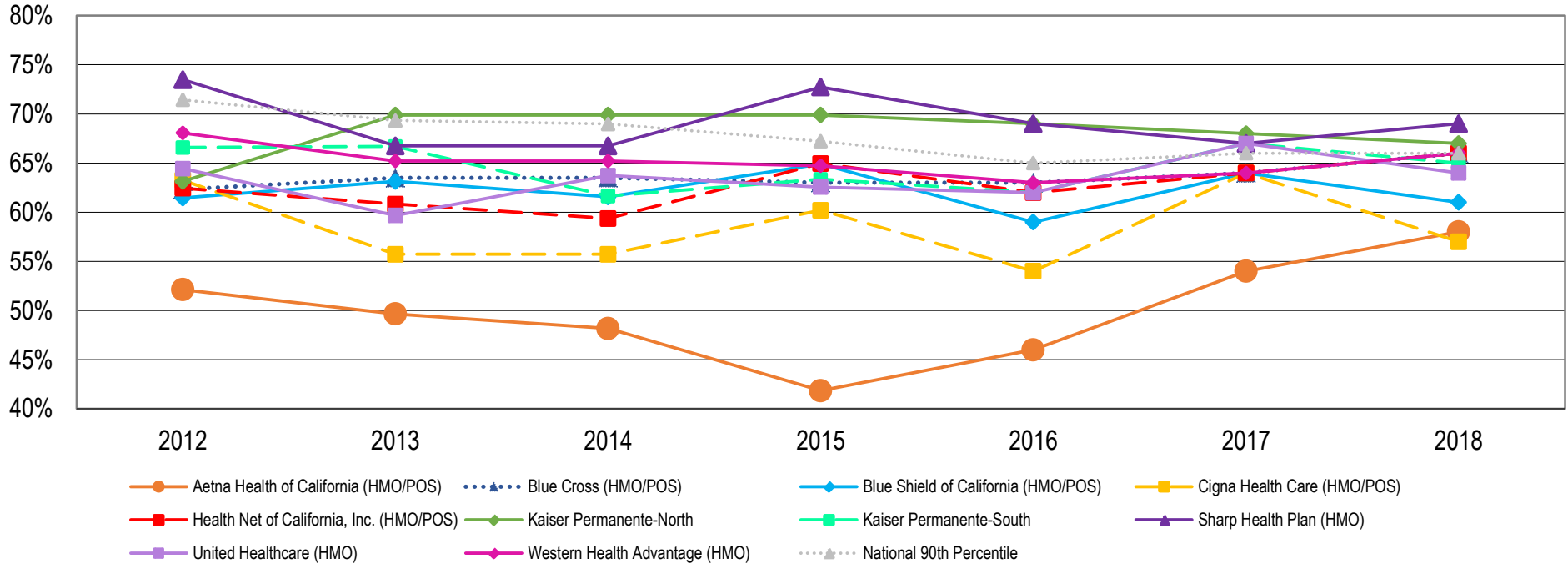


# Right Care Initiative: Key Quality Indicators for Cardiovascular Prevention Among California Health Plans

Trend analysis provided by the UC Berkeley School of Public Health Right Care Research Team, November 2019



## Controlling Blood Sugar (HbA1c<8) for People with Diabetes Among California Health Plans



	2012 <sup>‡</sup>	2013 <sup>‡</sup>	2014 <sup>‡</sup>	2015 <sup>‡</sup>	2016 <sup>*</sup>	2017 <sup>*</sup>	2018 <sup>*</sup>	Δ Since 2012
Aetna Health of California (HMO/POS)	52.13%	49.65%	48.18%	41.85%	46.00%	54.00%	58.00%	5.87%
<b>Blue Cross (HMO/POS)</b>	62.33%	63.50%	63.50%	63.02%	63.00%	64.00%	<b>66.00%</b>	3.67%
Blue Shield of California (HMO/POS)	61.45%	63.14%	61.56%	64.92%	59.00%	64.00%	61.00%	-0.45%
Cigna Health Care (HMO/POS)	63.26%	55.72%	55.72%	60.20%	54.00%	64.00%	57.00%	-6.26%
<b>Health Net of California, Inc. (HMO/POS)</b>	62.44%	60.83%	59.37%	64.96%	62.00%	64.00%	<b>66.00%</b>	3.56%
<b>Kaiser Permanente-North</b>	63.14%	<b>69.89%</b>	<b>69.89%</b>	<b>69.89%</b>	<b>69.00%</b>	<b>68.00%</b>	<b>67.00%</b>	3.86%
Kaiser Permanente-South	66.59%	66.69%	61.64%	63.35%	62.00%	<b>67.00%</b>	65.00%	-1.59%
<b>Sharp Health Plan (HMO)</b>	<b>73.48%</b>	66.75%	66.75%	<b>72.73%</b>	<b>69.00%</b>	<b>67.00%</b>	<b>69.00%</b>	-4.48%
United Healthcare (HMO)	64.44%	59.67%	63.74%	62.56%	62.00%	<b>67.00%</b>	64.00%	-0.44%
<b>Western Health Advantage (HMO)</b>	68.07%	65.21%	65.21%	64.72%	63.00%	64.00%	<b>66.00%</b>	-2.07%
<b>National 90th Percentile</b>	<b>71.43%</b>	<b>69.33%</b>	<b>68.98%</b>	<b>67.22%</b>	<b>65.00%</b>	<b>66.00%</b>	<b>66.00%</b>	-5.43%
<b>California Average</b>	64.69%	59.56%	63.03%	62.75%				
<b>National Average</b>	61.32%	58.90%	57.47%	55.34%				

<sup>‡</sup> Data directly from National Committee for Quality Assurance (NCQA)

<sup>\*</sup> Data from NCQA, prepared by the CA Office of the Patient Advocate (OPA)

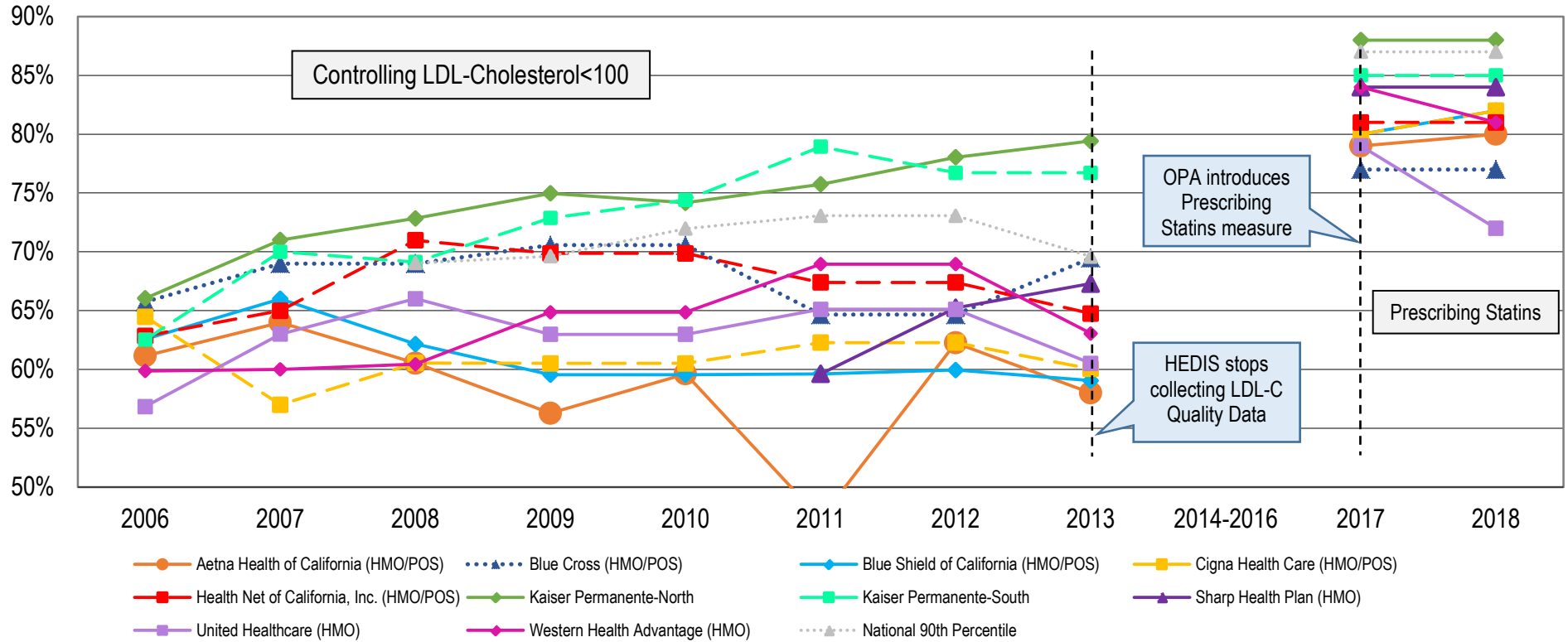


# Right Care Initiative: Key Quality Indicators for Cardiovascular Prevention Among California Health Plans

Trend analysis provided by the UC Berkeley School of Public Health Right Care Research Team, November 2019



## Controlling LDL-Cholesterol <100 & Prescribing Statins for People with Heart Disease Among California Health Plans



	2006 <sup>‡</sup>	2007 <sup>‡</sup>	2008 <sup>‡</sup>	2009 <sup>‡</sup>	2010 <sup>‡</sup>	2011 <sup>‡</sup>	2012 <sup>‡</sup>	2013 <sup>‡</sup>	2014-2016	2017 <sup>*</sup>	2018 <sup>*</sup>
Aetna Health of California (HMO/POS)	61.16%	64.00%	60.53%	56.27%	59.62%	47.30%	62.26%	58.00%	N/A	79.00%	80.00%
Blue Cross (HMO/POS)	65.74%	69.00%	69.00%	<b>70.56%</b>	70.56%	64.66%	64.66%	69.47%	N/A	77.00%	77.00%
Blue Shield of California (HMO/POS)	62.58%	66.00%	62.16%	59.56%	59.56%	59.62%	59.95%	59.05%	N/A	80.00%	82.00%
Cigna Health Care (HMO/POS)	64.48%	57.00%	60.55%	60.51%	60.51%	62.28%	62.28%	60.05%	N/A	80.00%	82.00%
Health Net of California, Inc. (HMO/POS)	62.84%	65.00%	<b>70.98%</b>	<b>69.87%</b>	69.87%	67.40%	67.40%	64.75%	N/A	81.00%	81.00%
<b>Kaiser Permanente-North</b>	66.04%	71.00%	<b>72.84%</b>	<b>74.97%</b>	<b>74.17%</b>	<b>75.74%</b>	<b>78.04%</b>	<b>79.42%</b>	N/A	<b>88.00%</b>	<b>88.00%</b>
Kaiser Permanente-South	62.53%	70.00%	<b>69.13%</b>	<b>72.87%</b>	<b>74.41%</b>	<b>78.94%</b>	<b>76.72%</b>	<b>76.72%</b>	N/A	85.00%	85.00%
Sharp Health Plan (HMO)						59.62%	65.23%	67.30%	N/A	84.00%	84.00%
United Healthcare (HMO)	56.84%	63.00%	66.01%	62.98%	62.98%	65.11%	65.11%	60.51%	N/A	79.00%	72.00%
Western Health Advantage (HMO)	59.87%	60.00%	60.44%	64.86%	64.86%	68.95%	68.95%	63.06%	N/A	84.00%	81.00%
<b>National 90th Percentile</b>			<b>69.04%</b>	<b>69.63%</b>	<b>71.97%</b>	<b>73.06%</b>	<b>73.06%</b>	<b>69.59%</b>	N/A	<b>87.00%</b>	<b>87.00%</b>

<sup>‡</sup> Data directly from National Committee for Quality Assurance (NCQA)

<sup>\*</sup> Data from NCQA, prepared by the CA Office of the Patient Advocate (OPA)