



**Right  
Care Initiative**

*Clinical Outcomes  
Improvement Leadership Summit*

***Sacramento Hotspot Data***

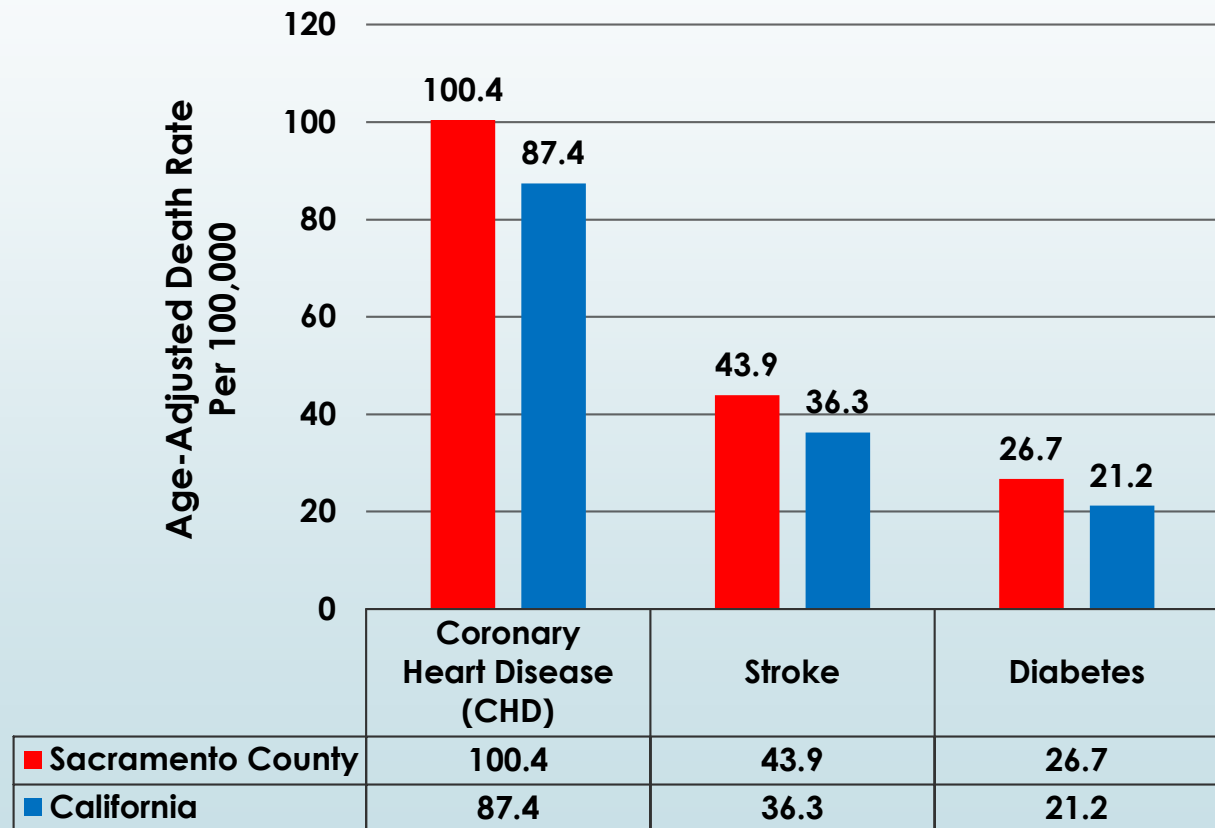
*November 18<sup>th</sup>, 2019*

**Susan L. Ivey, MD, MHSA**

*Professor, adjunct, School of Public Health, University of California  
Director of Research, Health Research for Action, School of Public Health, UC Berkeley*

*Data Compiled by Bryan Vuong, Research Associate, Right Care Initiative*

# Higher Mortality Rates for Coronary Heart Disease, Stroke, and Diabetes in Sacramento County



Average age-adjusted death rate (2015-2017). Source: California Department of Public Health. County Health Status Profiles 2019

# How does Sacramento County Compare to other CA Communities: Coronary Heart Disease Mortality?

| Deaths due to Coronary Heart Disease |                                       |
|--------------------------------------|---------------------------------------|
| County (rank)                        | Age-adjusted Death Rate (per 100,000) |
| Santa Clara (6)                      | 56.6                                  |
| San Diego (23)                       | 79.2                                  |
| State Rate                           | 87.4                                  |
| <b>Sacramento (36)</b>               | <b>100.4</b>                          |
| Los Angeles (41)                     | 101.7                                 |

Average age-adjusted death rate (2015-2017). Source: California Department of Public Health. County Health Status Profiles 2019

# How does Sacramento County Compare to other CA Communities: Stroke Mortality?

| Deaths due to Deaths due to Stroke (without TIA) |                                       |
|--|---------------------------------------|
| County (rank)                                    | Age-adjusted Death Rate (per 100,000) |
| Santa Clara (8)                                  | 26.8                                  |
| Los Angeles (23)                                 | 34.0                                  |
| San Diego (29)                                   | 35.6                                  |
| State Rate                                       | 36.3                                  |
| <b>Sacramento (47)</b>                           | <b>43.9</b>                           |

Average age-adjusted death rate (2015-2017). Source: California Department of Public Health. County Health Status Profiles 2019

# How does Sacramento County Compare to other CA Communities: Diabetes Mortality?

| Deaths due to Diabetes |                                       |
|------------------------|---------------------------------------|
| County (rank)          | Age-adjusted Death Rate (per 100,000) |
| San Diego (33)         | 20.7                                  |
| Santa Clara (34)       | 20.8                                  |
| State Rate             | 21.2                                  |
| Los Angeles (40)       | 22.9                                  |
| <b>Sacramento (51)</b> | <b>26.7</b>                           |

Average age-adjusted death rate (2015-2017). Source: California Department of Public Health. County Health Status Profiles 2019

# Demographics for California and Sacramento County - Age



|          | California | Sacramento |
|----------|------------|------------|
| Under 50 | 67.0%      | 67.8%      |
| 50-64    | 18.7%      | 18.5%      |
| 65+      | 14.3%      | 13.7%      |

Source: Patient Discharge Data 2017. Office of Statewide Health Planning and Development

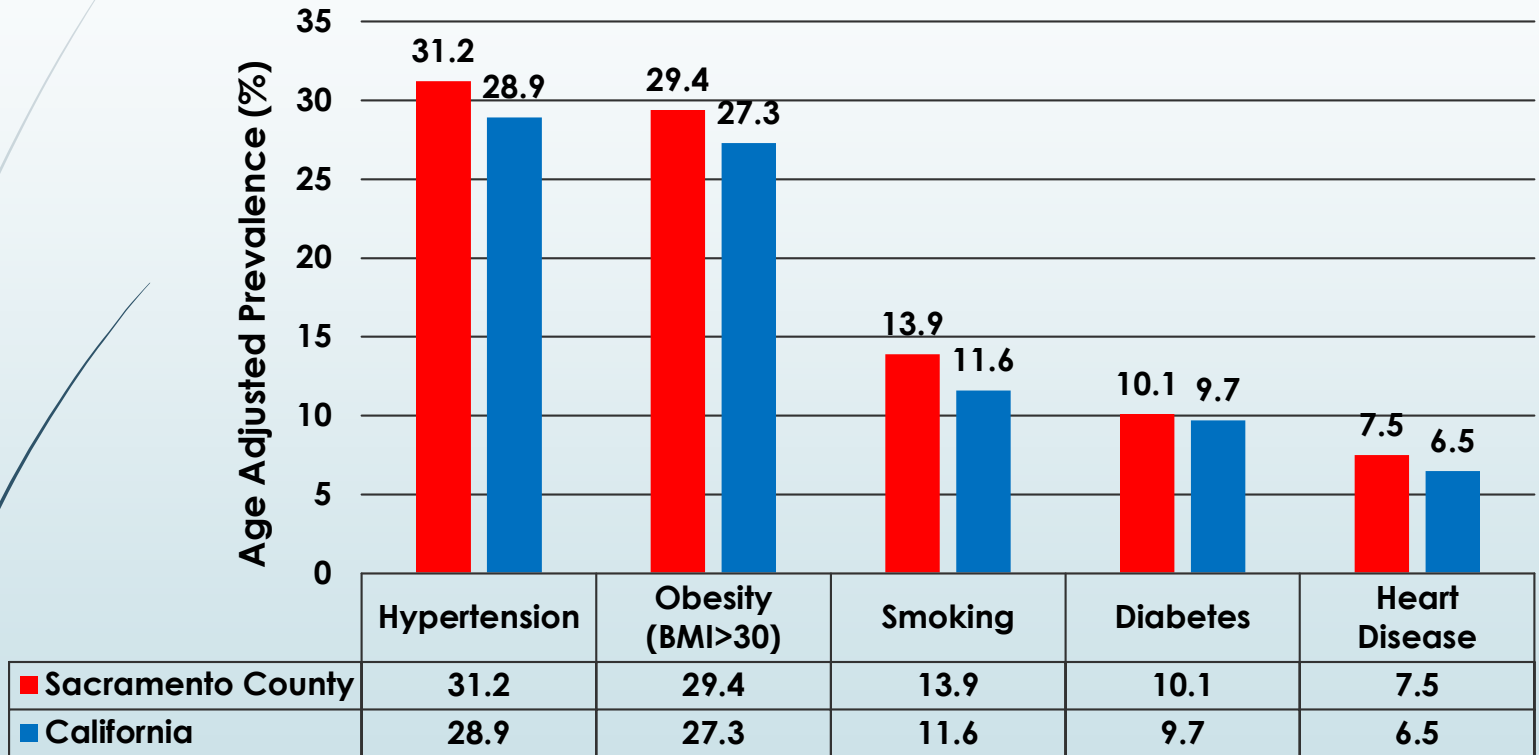
# Demographics for California and Sacramento County –Race/Ethnicity



|                                    | California | Sacramento |
|------------------------------------|------------|------------|
| White                              | 37.8%      | 45.3%      |
| African American                   | 5.7%       | 10.2%      |
| Hispanic                           | 39.5%      | 23.6%      |
| Asian and Pacific Islander         | 13.5%      | 14.7%      |
| American Indian and Alaskan Native | 0.4%       | 0.6%       |
| Native Hawaiian                    | 0.4%       | 1.0%       |
| Multi-Race                         | 2.7%       | 4.5%       |

Source: Patient Discharge Data 2017. Office of Statewide Health Planning and Development

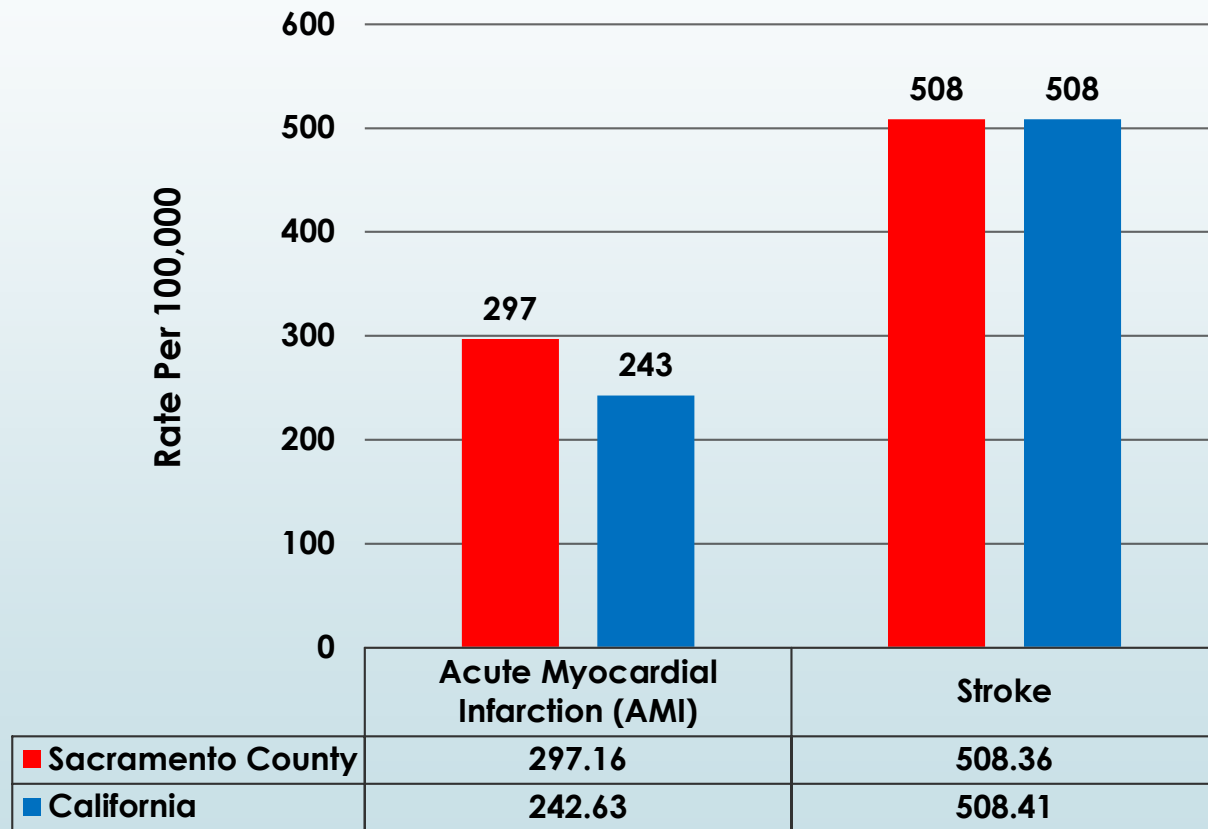
# Sacramento Self-Reported Risk Factors - CA Health Interview Survey, 2014-2018



Source: Self-reported, publicly available telephone survey data, California Health Interview Survey (CHIS) UCLA Center for Health



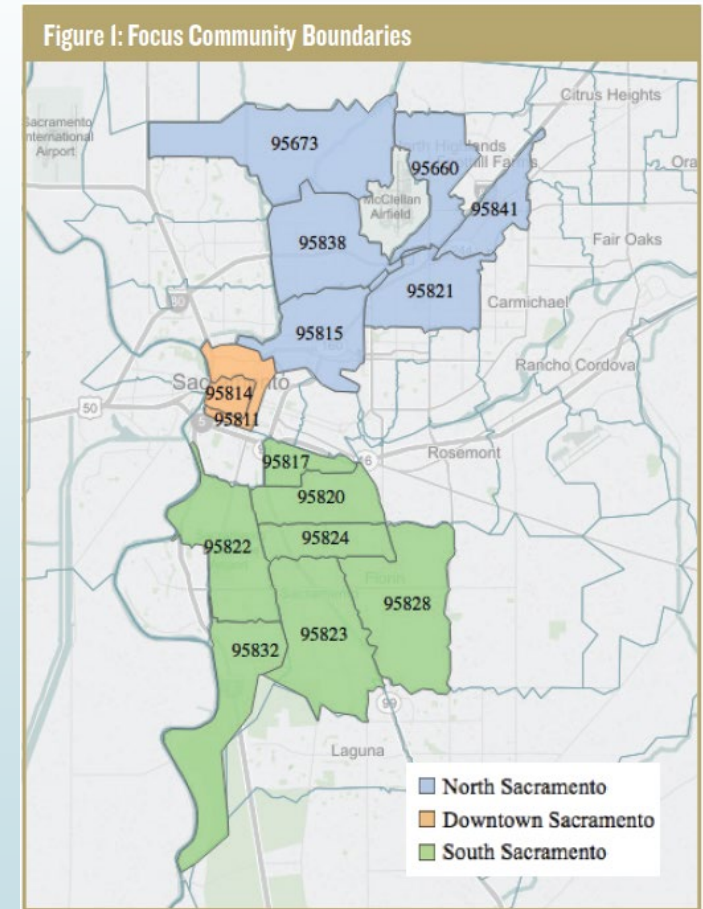
# Higher Rates of Acute MI hospitalization in Sacramento County



Source: Patient Discharge Data 2017. Office of Statewide Health Planning and Development – non-age-adjusted data

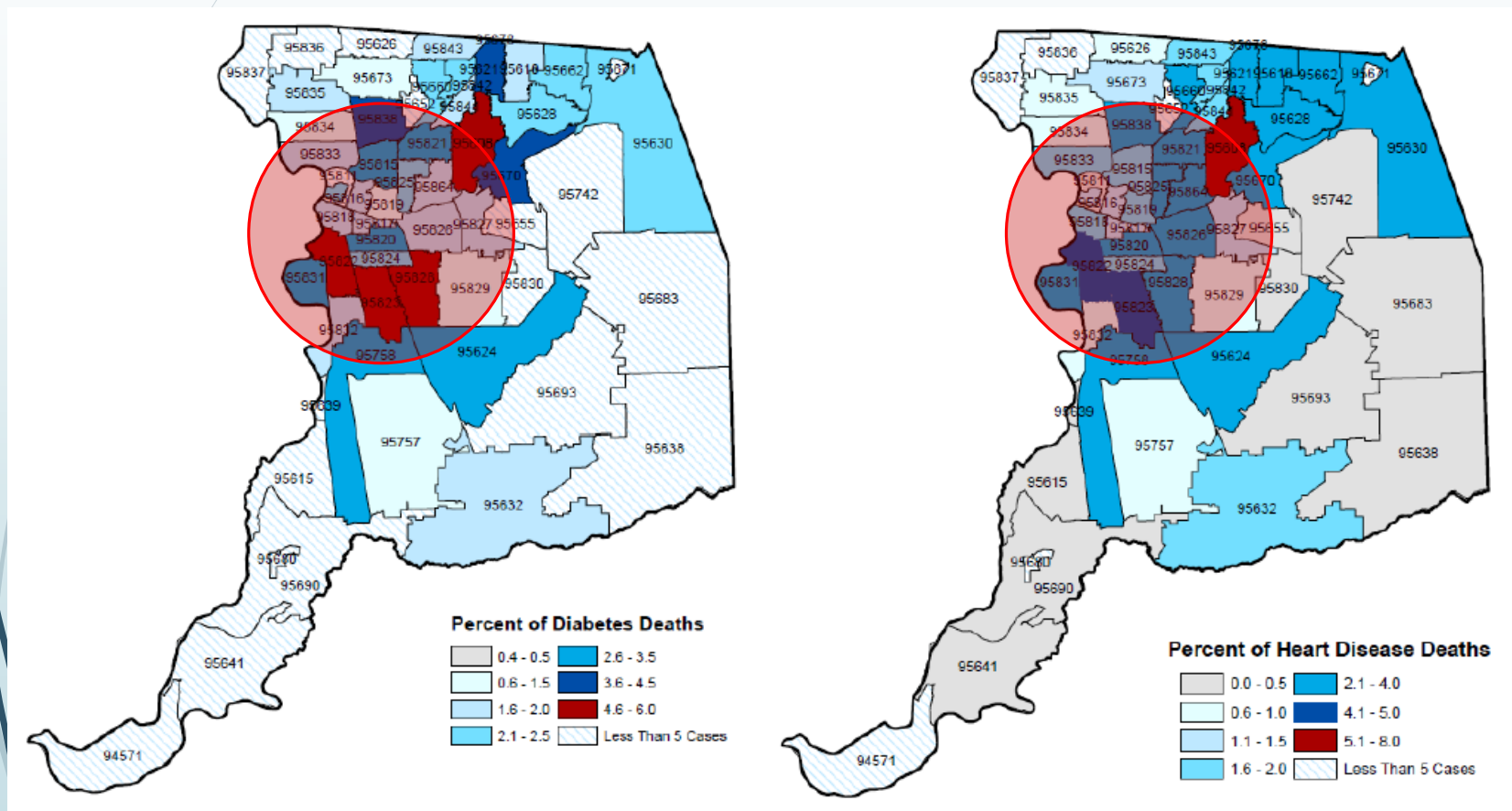
# Communities of Need in Sacramento County

- ▶ There are the 15 zip codes that experience the greatest socioeconomic inequities and the highest rates of disease and mortality in the county.
- ▶ Includes greater ED Visit & Hospitalization for Diabetes, Heart Disease, and Hypertension



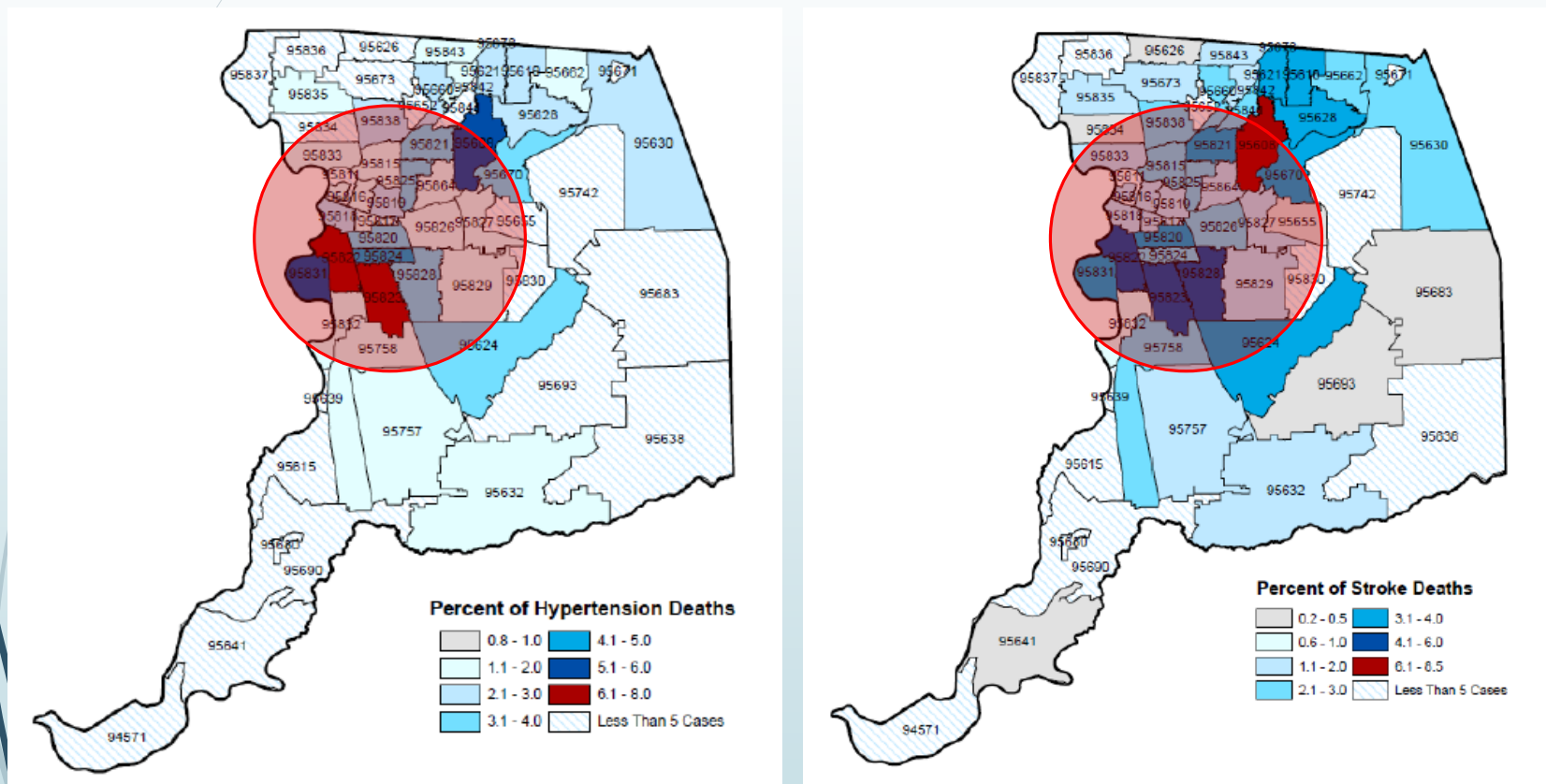
Source: Sacramento County Community Health Needs Assessment 2016 Update.

# Sacramento County Mortality Hot Spots for Diabetes & Heart Disease (2007-2011)



Source: California Department of Public Health, Map 3,4,5,6. Community Health Status Report 2014

# Sacramento County Mortality Hot Spots for Hypertension & Stroke (2007-2011)



Source: California Department of Public Health, Map 3,4,5,6. Community Health Status Report 2014

Thank you to Hattie Hanley and  
Bryan Vuong for supporting the  
Right Care Initiative research team

**Contact information:**

**Susan L. Ivey, MD, MHSA**

**Professor, Adjunct, School of Public Health and  
Director of Research, Health Research for Action**

**Email: [sivey@berkeley.edu](mailto:sivey@berkeley.edu)**





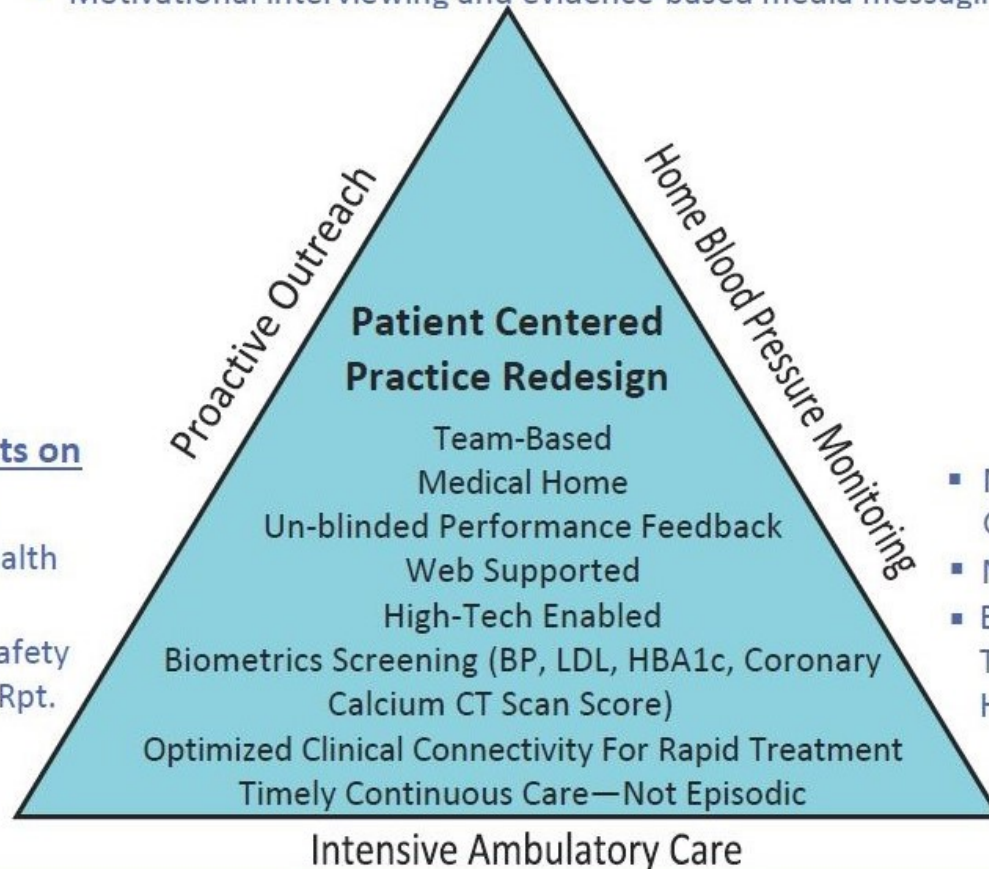
# Promising Interventions to Reach Right Care Control Targets for Heart Attack, Stroke, and Diabetes Prevention and High Quality Management

## Patient Activation

- Stress reduction, medication adherence, healthy sleep, nutrition & physical activity, smoking cessation
  - Evidence-based patient education (e.g., Project DULCE; Stanford Patient Self-Management)
  - Motivational interviewing and evidence-based media messaging

## Clinical Pharmacists on Care Team

- CA Dept. Public Health White Paper
- HRSA.gov/patientsafety
- Surgeon General's Rpt.



## Protocols

- Nationally Endorsed Guidelines (ACC, ADA)
- NICE UK (eg. chest pain)
- Bundled Medication Therapy (Aspirin, Statin, Hypertension Agents)