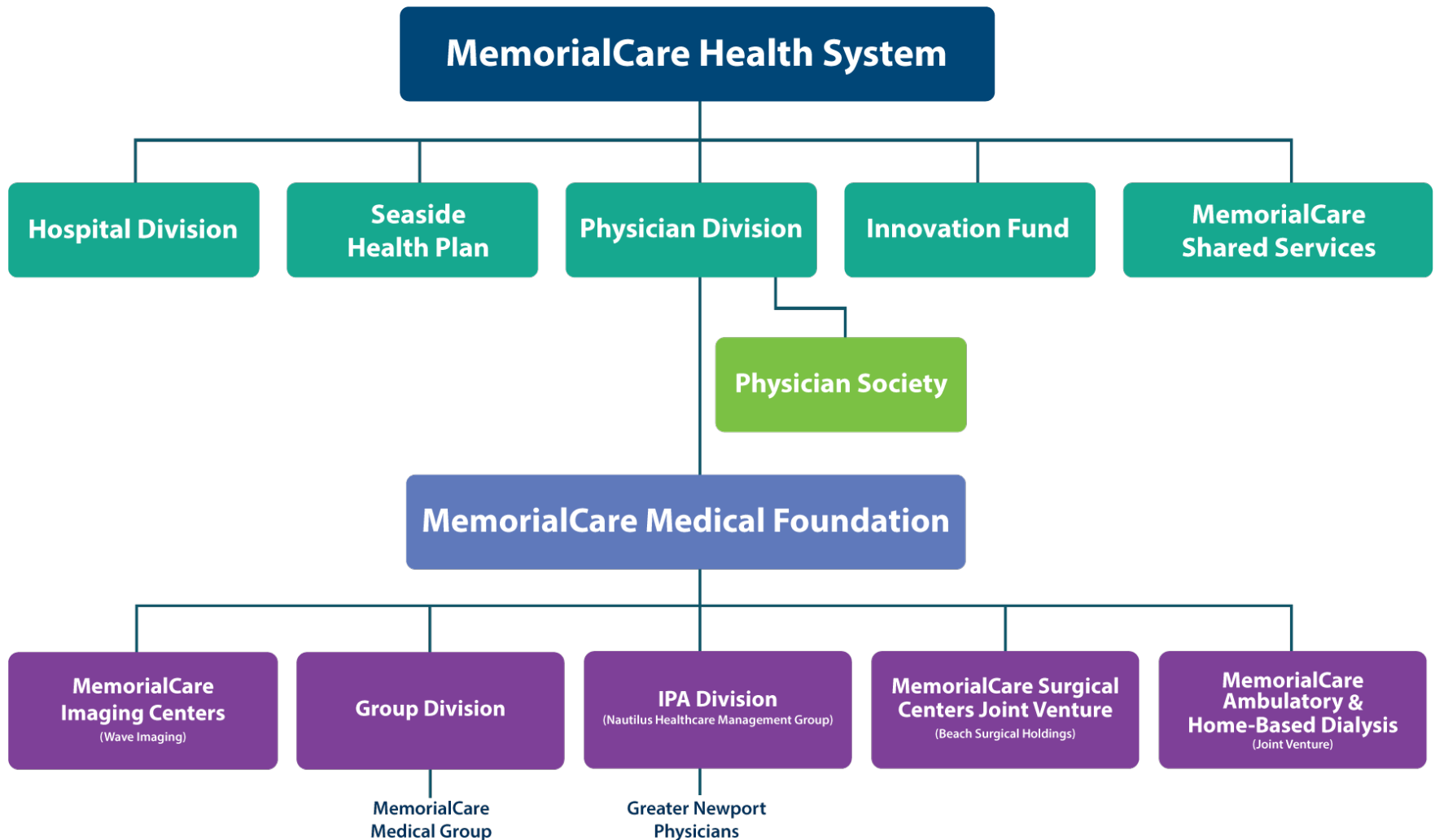


# Diabetes Team Based Care: An IPA Story



Adam Solomon, MD, MMM, FACP  
Andrea De Coro, PharmD

# Organizational Structure



# Los Angeles County

Torrance

Anaheim

Long Beach

# Orange County

Newport Beach

Dana Point

San Clemente

COMING SOON

COMING SOON



MemorialCare Medical Centers



Miller Children's & Women's Hospital Long Beach



MemorialCare Shared Services



MemorialCare Physician Groups



Urgent Care Centers



MemorialCare Imaging Centers



MemorialCare Surgical Centers



Dialysis Centers



91

57

91

605

55

22

261

241

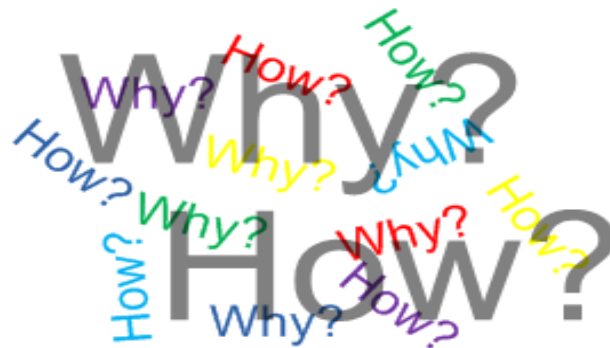
405

73

15

# What, Why and How

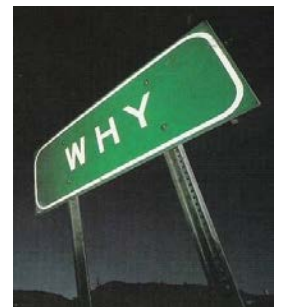
- Team based program for poorly controlled diabetic patients
- PCP's needed help
- Created a vision and team



# ACTIVE Diabetes Program



- Improve outcomes in at risk population
  - and BTW the problem is growing
- Poorly controlled diabetics need something different
- PCP's and Endo's don't have time
- Other healthcare disciplines provide different perspectives



# ACTIVE Diabetes Program

- Centralized program
- Multidisciplinary team
- Focus on patients with A1c >8
- Address comorbid conditions
- Provide individualized care
- PCP referral



# ACTIVE Diabetes Program



- Incentivize PCP's performance in diabetes care
- Created a team they would trust
  - Pharmacists were already trusted
  - Added Social Worker
  - Added Dietitian
- Patients are closely followed and continuously monitored
- Develop criteria to be tracked and reported
- Keep PCP apprised and involved



## Dietitian Role:

- Educate on importance of healthy nutrition and diet
- Identify areas of opportunity
- Create agreed upon goals that patient can adhere to
- Also provides nutritional counseling to newly diagnosed diabetics





# PCP Input...



- “I don't think I can stress enough **how much MORE the PCPs value the care given to our diabetics by the pharmacists in Active Diabetes than by the endocrinologists**, whose resources to track and educate our patients are just as limited as the PCPs. There's better follow up and better results.” Brian Coyne, MD
- “The Active Diabetes Program **helps my most challenging patients reach their goals**, and makes it much easier to manage them. What PCPs lack – time to educate, convince, and microadjust therapies – the Program provides with well-trained and outcomes-focused pharmacy staff. Patients love their results, and the ROI and satisfaction scores can't be beat. Highest recommendation.” Peter Kim, MD

# ACTIVE Diabetes Results (2015)

## ACTIVE Diabetes vs. IHA 90<sup>th</sup> Percentile

